

Opel Airbag Reseter

After car crash and airbag deployment, Opel airbag sensor always stay locked (Controlunit faulty or deployed) and must be replaced. Even after small accident Airbag sensor will write in internal memory special error message "crash data stored" or "computer fault" and after you need to exchange very expensive sensor to new one. With our Opel Airbag Reset Tool you can reset and repair airbag computer in your office in 1 minute. No need to remove airbag sensor from the car.

How Opel Airbag Reseter works:

Very simple user instruction: connect this tool to Opel OBD II connector (for cars from year 1996-2002). **RED button** is for airbag "crash data" erase. Push this button once and wait: yellow light start to flash and after 15 second green light inform you that "crash data" is erased. Red light set ON if erasing is not successful. **yellow button** is for erase airbag "fault memory" or "errors". If airbag warning lamp go OFF and immediately ON - evaluate airbag "error memory" using other equipments and repair according error code.

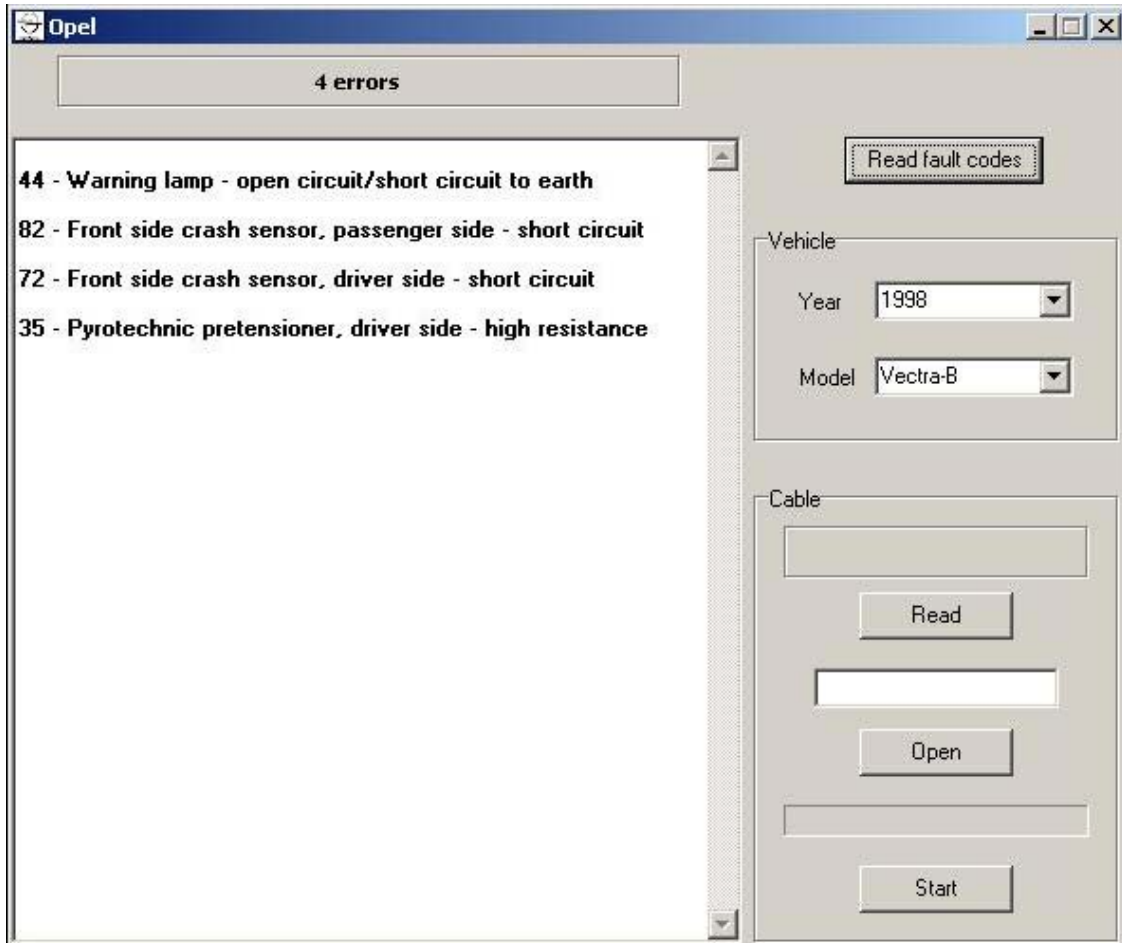


When we apply the +12V power supply to Opel airbag reseter ,the yellow light will flash 10 times,this indicates the system checking .After this we can do the normal operation.

Opel Airbag Reset Tool has incorporated fully automatic airbag sensor type recognition. Opel Airbag Reset Tool works without additional computer and thought car OBD II connector can erase airbag sensor "crash data" or only fault memory.

Opel Airbag Reset Tool user manual

For evaluate crash memory and repair Opel airbag system you can use special program:



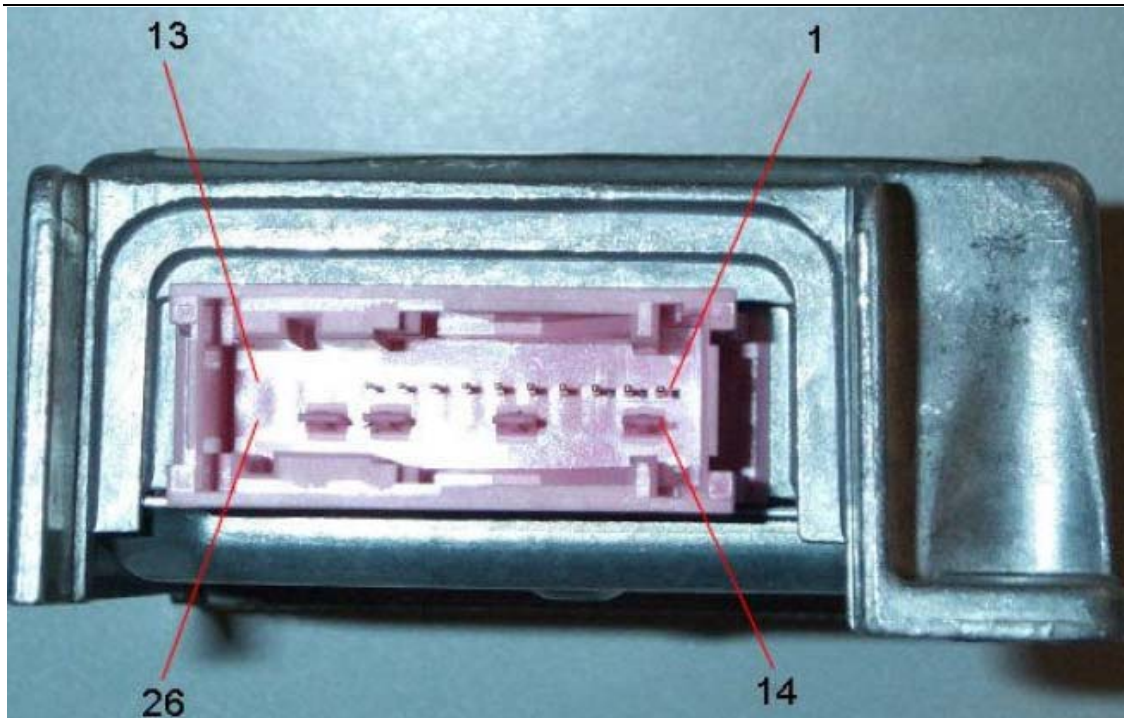
This program works only with Opel Airbag Reset Tool hardware. Connect Opel Airbag Reset Tool to car OBDII connector, select car year and type and type read fault codes. Works only with original COM port.

Works with these cars:

Older Opel cars to year 1997 with pink 26-pin connector:

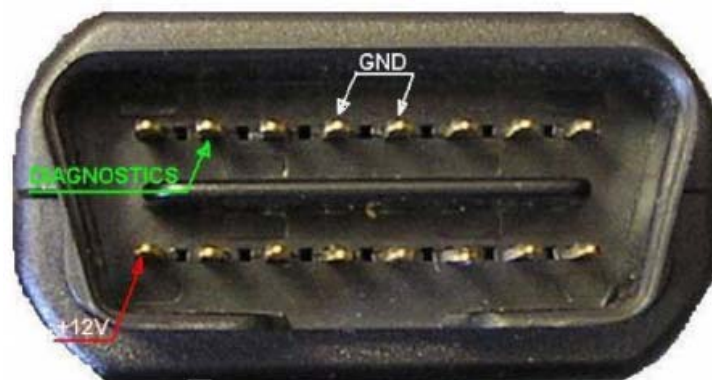
- Omega, Vectra, Corsa, Astra, Tigra and others.

Opel Airbag Reset Tool user manual



You can connect this sensor on the table and erase crash data using our Opel Airbag Tool. Use this wiring:

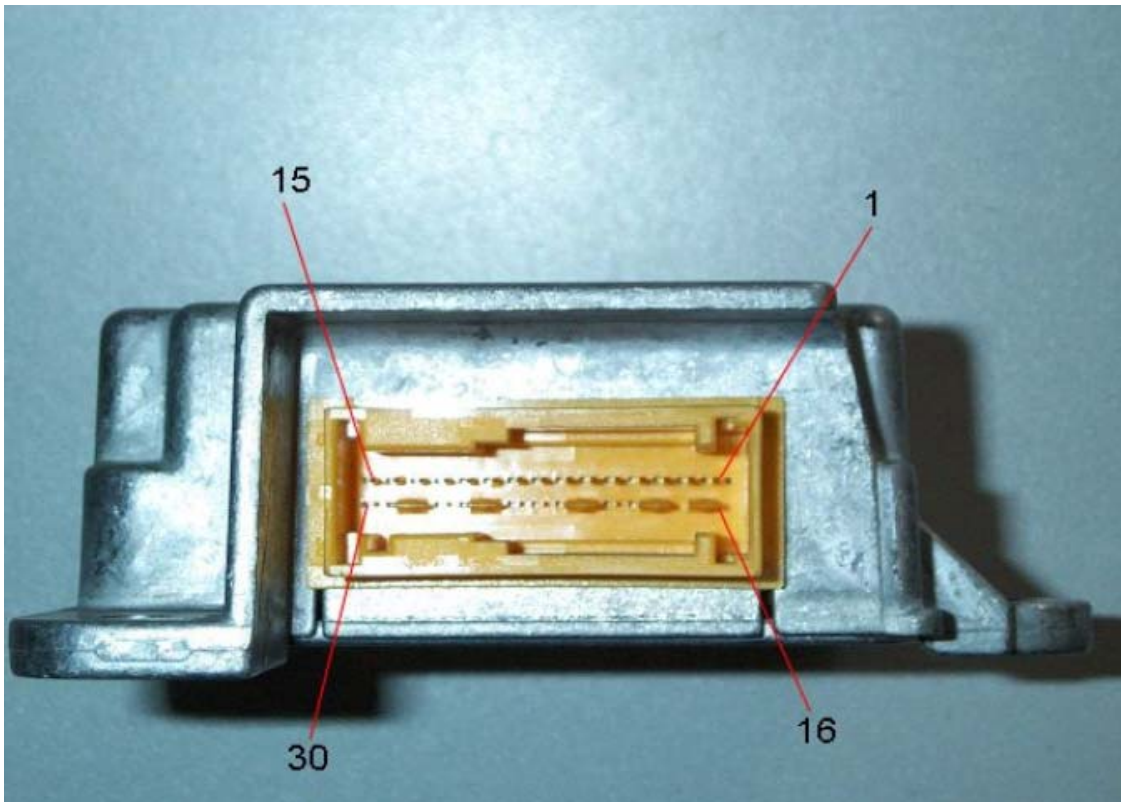
Airbag sensor: K-line = pin 3+4, GND = pin 10, +12V = pin 7
Opel Airbag Reset Tool: K-line = pin 7 GND = pin 4+5, +12V = pin 16



Apply +12V power supply and push RED or YELLOW button on the Opel Airbag Tool.

Opel Airbag Reset Tool user manual

Opel cars 1997 airbag sensor with yellow or orange 30-pin connector.



You can connect this sensor on the table and erase crash data using our Opel Airbag Tool.

Use this wiring:

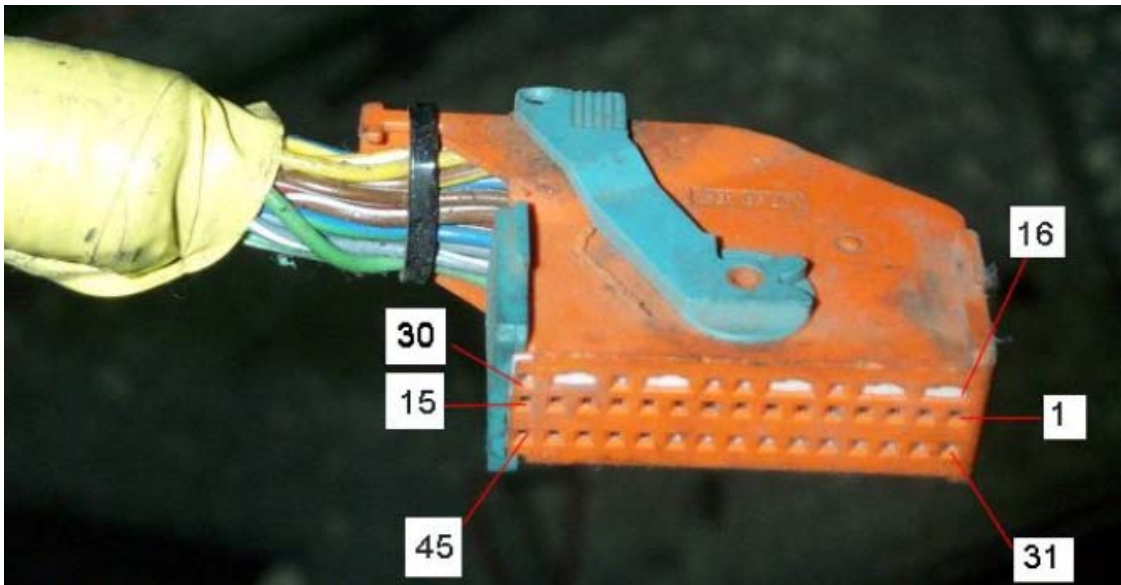
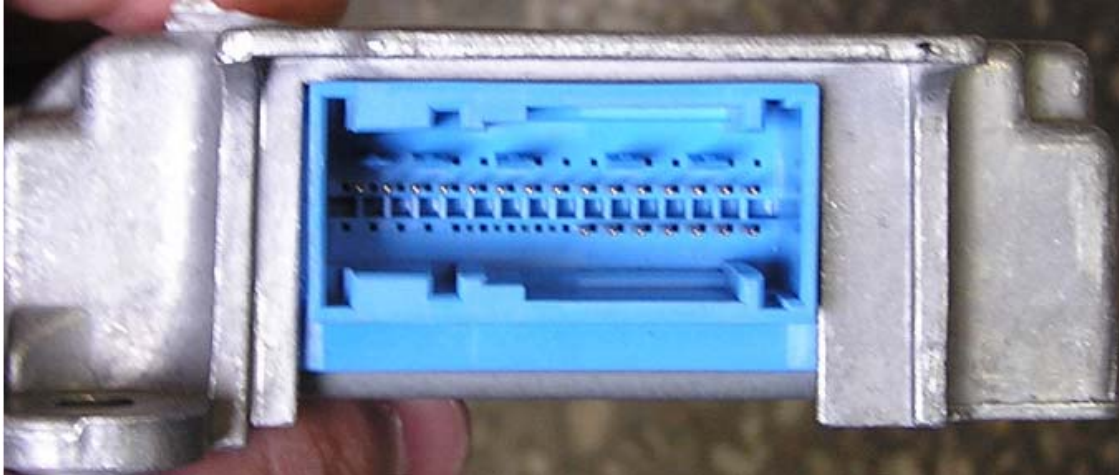
Airbag sensor: K-line = pin 5 (connected with car OBDII connector pin 12), GND = pin 6,
+12V = pin 8, airbag lamp = pin 9;

Opel Airbag Reset Tool: K-line = pin 12, GND = pin 4+5, +12V = pin 16

Apply +12V power supply and push RED or YELLOW button on the Opel Airbag Tool.

Opel Airbag Reset Tool user manual

Opel cars 1998-2000 airbag sensor with orange, brown or blue 45-pin connector.



You can connect this sensor on the table and erase crash data using our Opel Airbag Tool.

Use this wiring:

Airbag sensor: K-line = pin 12 (connected with car OBDII connector pin 12), GND = pin 7,
+12V= pin 5, airbag lamp = pin 6;

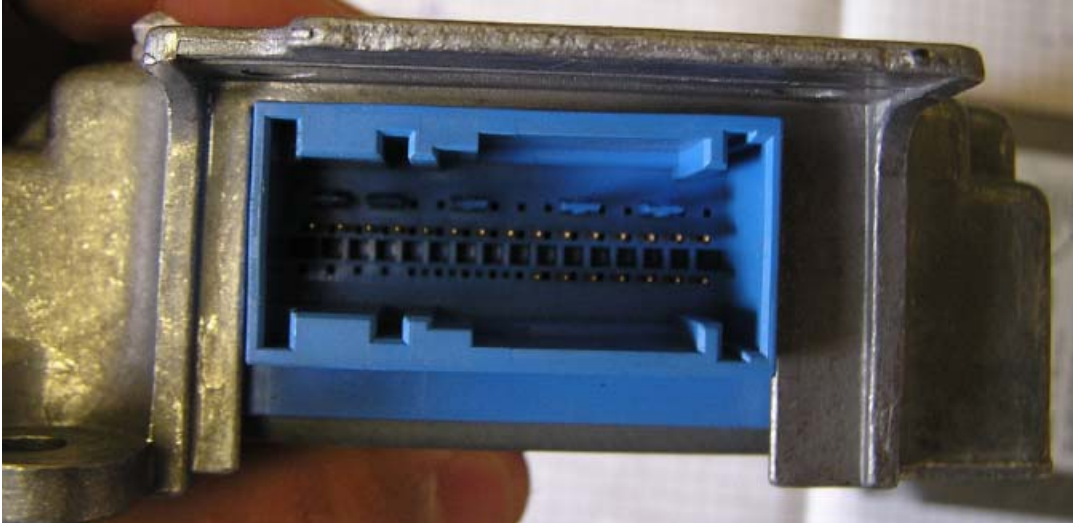
Opel Airbag Reset Tool: K-line = pin 12, GND = pin 4+5, +12V = pin 16

Apply +12V power supply and push RED or YELLOW button on the Opel Airbag Tool.

<http://www.dlsmelecom.com/>

Opel Airbag Reset Tool user manual

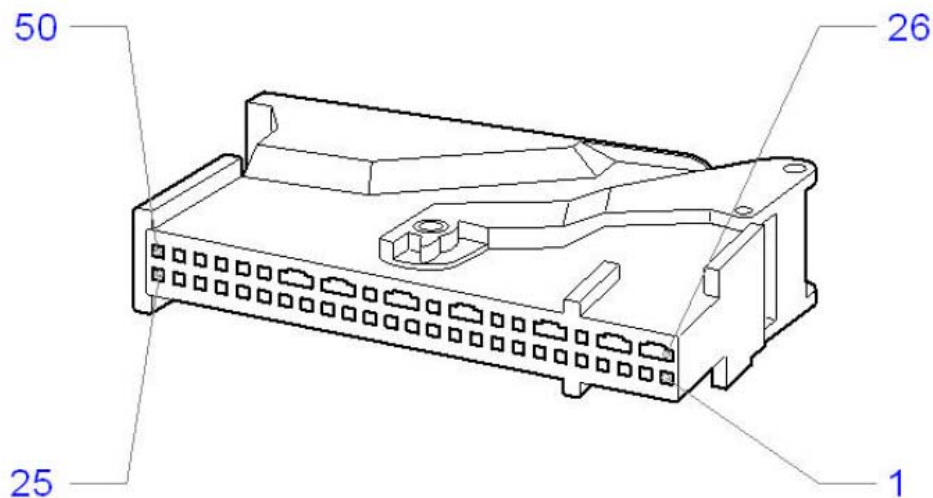
Opel cars (Zafira, Astra G) 1998-2000 airbag sensor with green or dark-blue 45-pin connector.



You can connect this sensor on the table and erase crash data using our Opel Airbag Tool.
Use this wiring:
Airbag sensor: K-line = pin 37 (connected with car OBDII connector pin 12), GND = pin 7,
+12V= pin 35, airbag lamp = pin 6;
Opel Airbag Reset Tool: K-line = pin 12, GND = pin 4+5, +12V = pin 16

Apply +12V power supply and push RED or YELLOW button on the Opel Airbag Tool.

Agila 2001 airbag sensor.



You can connect this sensor on the table and erase crash data using our Opel Airbag Tool.

<http://www.dlsmelecom.com/>

Opel Airbag Reset Tool user manual

Use this wiring:

Airbag sensor: K-line = pin 37 (connected with car OBDII connector pin 12), GND = pin 6,
+12V= pin 9, airbag lamp = pin 7;

Opel Airbag Reset Tool: K-line = pin 12 or 7, GND = pin 4+5, +12V = pin 16

Apply +12V power supply and push RED or YELLOW button on the Opel Airbag Tool.

Using these pictures you can erase airbag “on the table” – you must connect GND, +12V, and Diagnostic line between airbag sensor and Opel Airbag Eraser, connect power supply to GND and +12V and use Eraser like in the car.

OBD connector pinouts:

