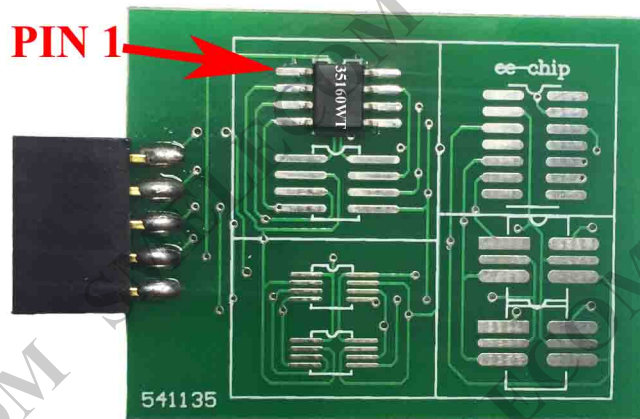




SMELECOM 35160/35128 EMULATOR MANUAL

BMW dashboards from August 2015 are equipped with a 35160WT or 35128WT eeprom, which is not erasable and has page-id which locks this memory to its own dashboard-micro. If you need to correct such dashboards you **CANNOT** erase or substitute the original memory with recovered/bought one. You have to emulate original memory with our emulator. **Note: the following instructions apply to any non Smelecom programmer with 35160 or 35128 eeprom software.**

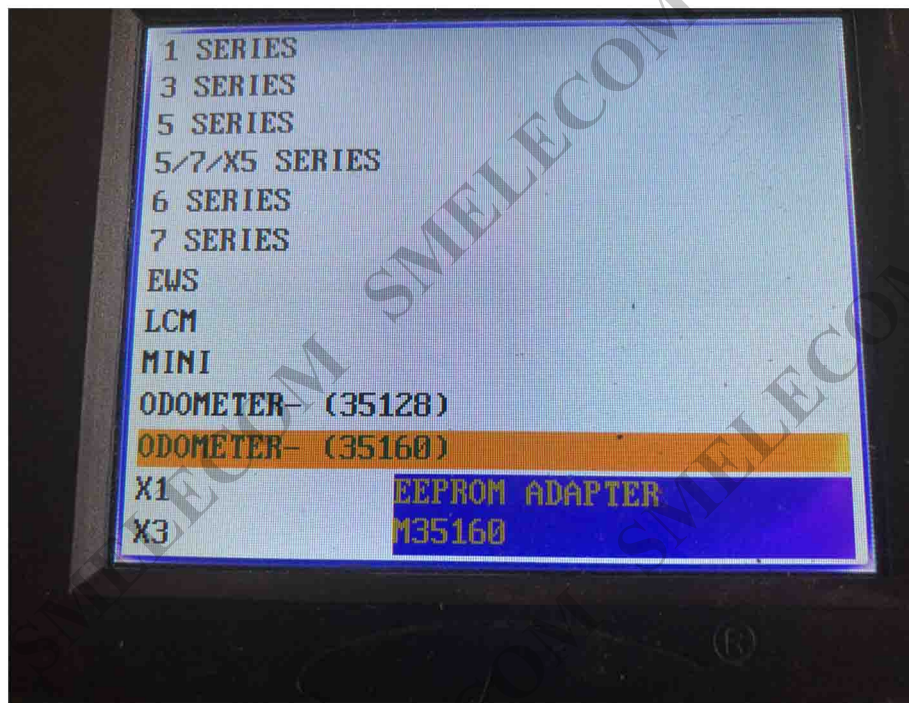
1. Remove the 35160 eeprom from the dashboard and solder it to the eeprom adapter PCB board.



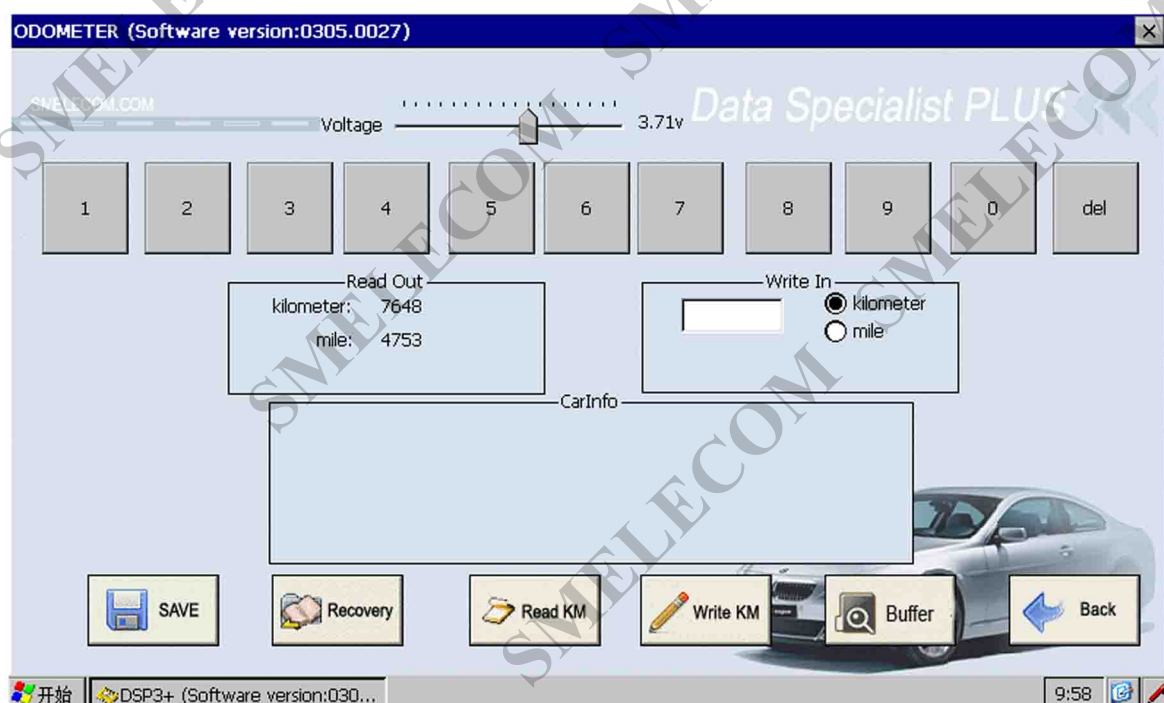
2. Connect the EEP Adapter and PCB Board to the Smelecom programmer.



3. Choose from the BMW Odometer menu 35160 or 35128 Eeprom Adapter program.



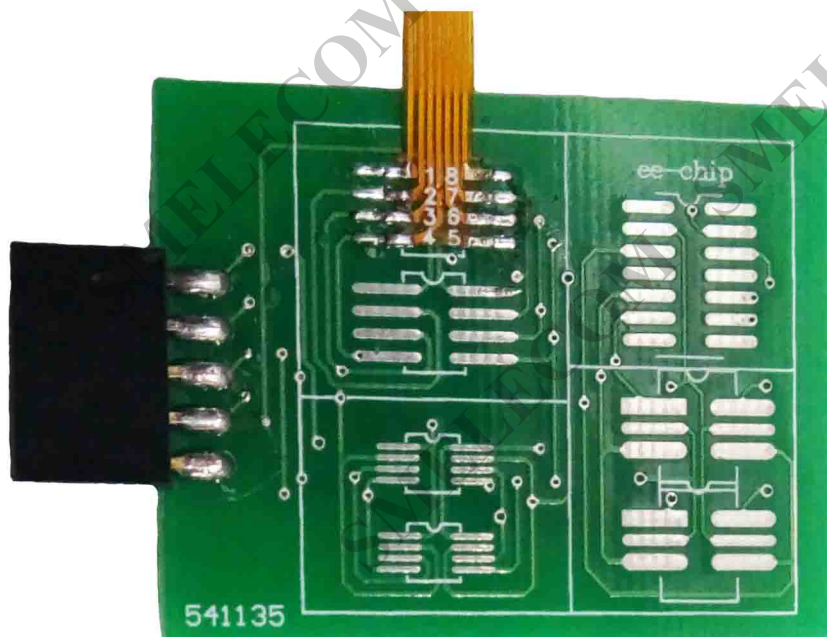
4. Read and save the original KM File. Check that the reading is showing the correct KM of the car. Do not leave the reading page of programmer, so you are ready in the following stages to write the new mileage.



5. Solder the 35160/35128 eeprom to the Emulator's corresponding position below.



6. Solder the Emulator on to the eeprom adapter PCB board, as shown below.



7. Connect the eeprom PCB Board and EEP Adapter to the programmer.



8. Enter and write new mileage.

9. Install and solder the Emulator into the dashboard.

