

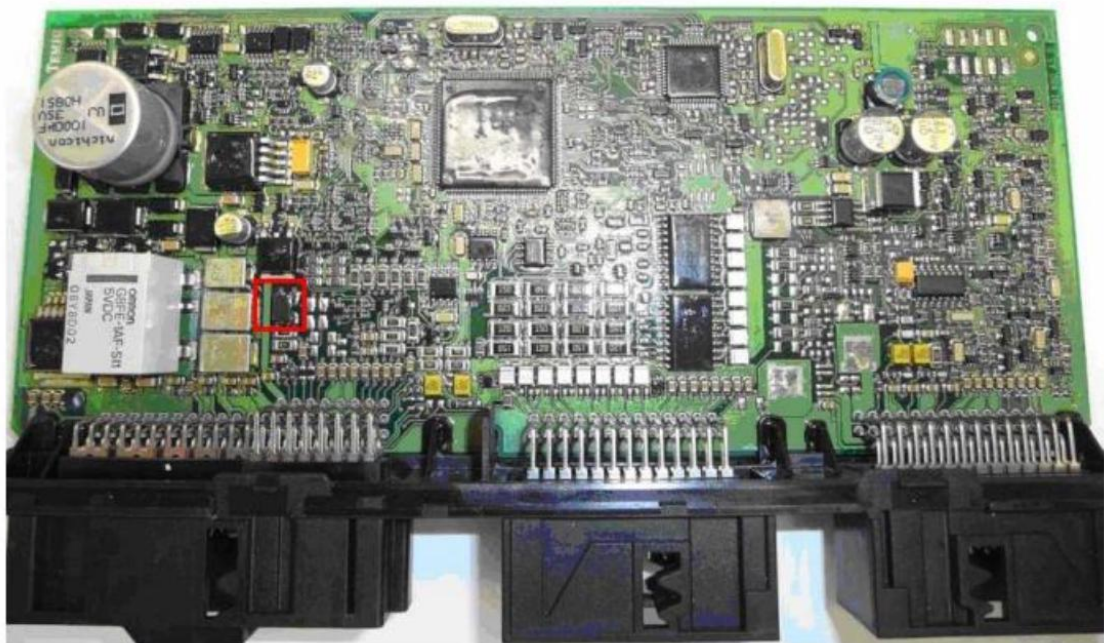
BMW CAN BLOCKER MANUALL

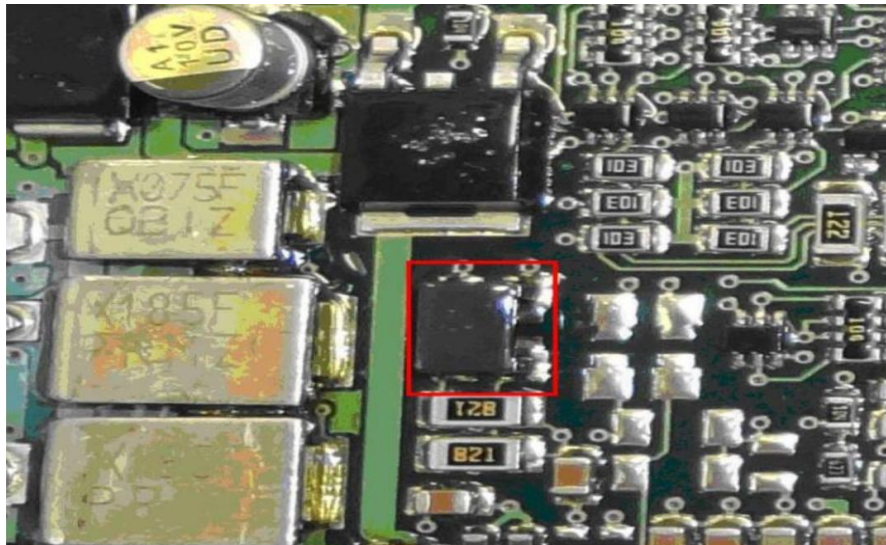
1.BMW 5er F10 CAS4

Remove the CAS from the car in the driver's side.

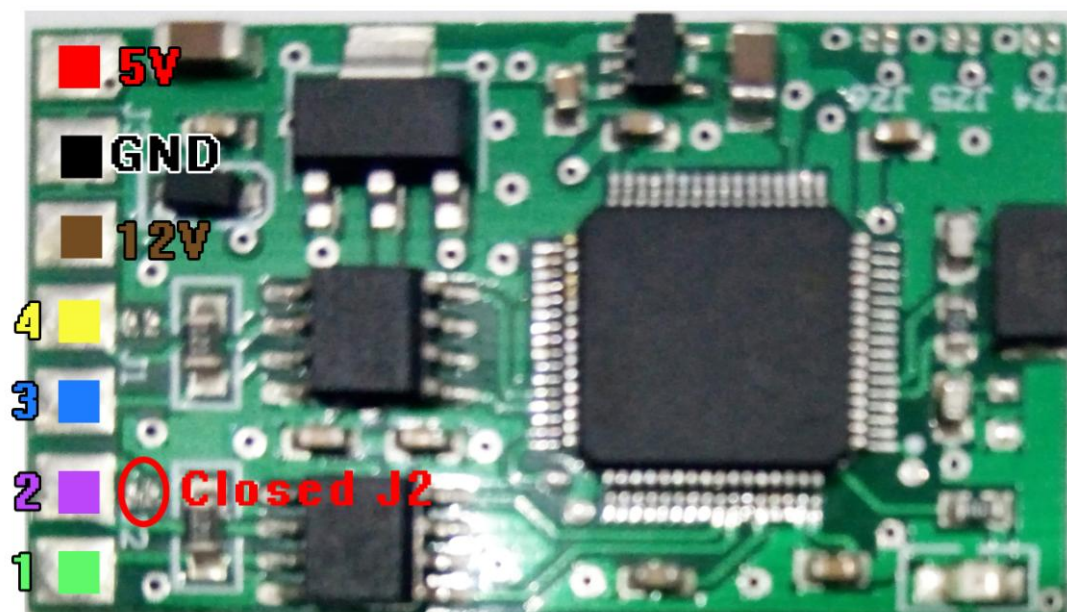
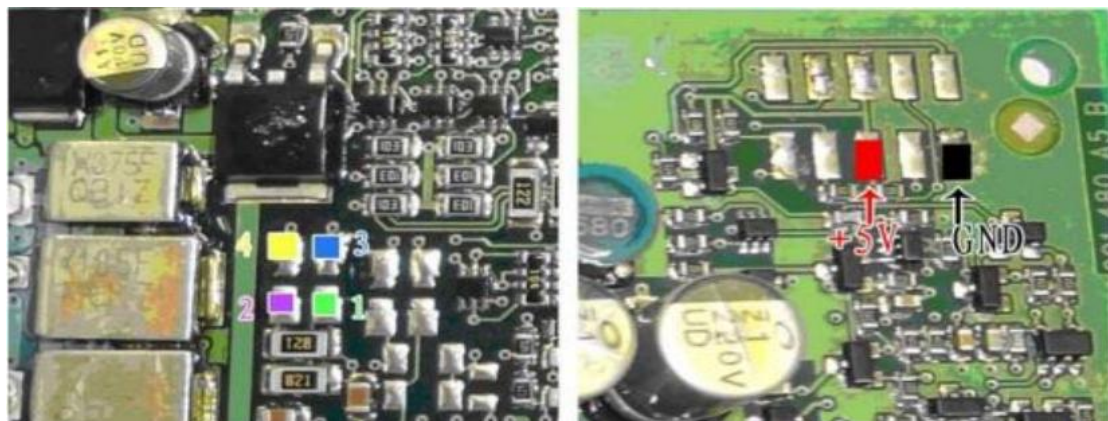


Open the case, and remove the unit in the red circle.



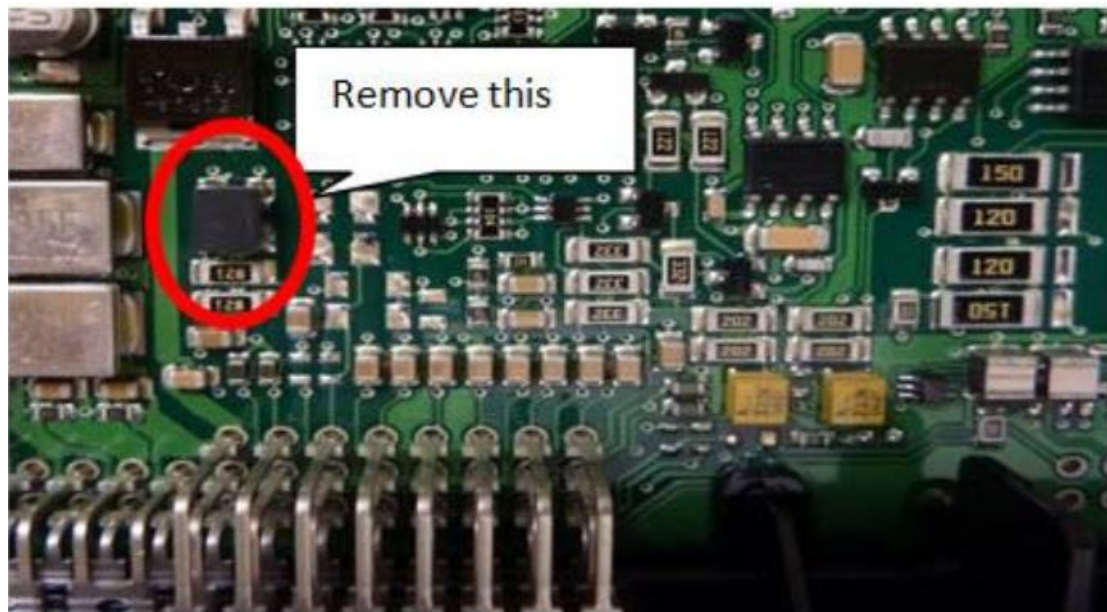


Connect the points with the same color on BMW can blocker to the dash.



2.BMW 7er F01 / 5er GT F07 / 5er F10 / 1er F20 / 3er F30 fitted with CAS 4 with MCU mask 5M48H

Open the case, and remove the unit in the red circle.



Connect the points with the same color on BMW can blocker to the dash.

