

# BMW CAN BLOCKER MANUAL

## 1、BMW 5er F10 CAS4

Remove the CAS from the car in the driver's side



Figure 1

Open the case, and remove the unit in the red circle.

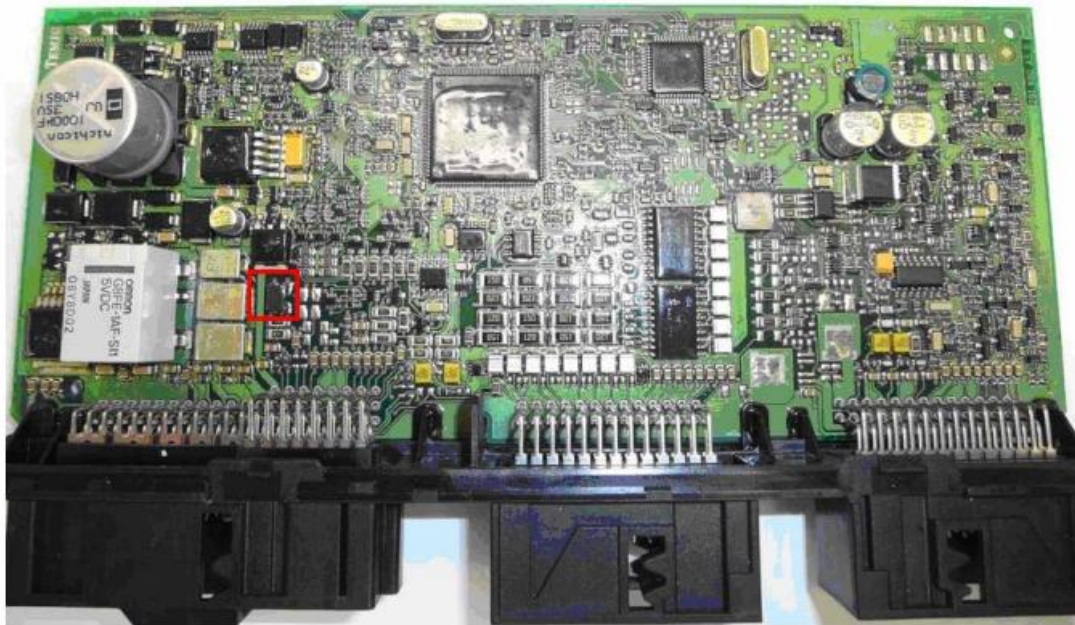


Figure 2





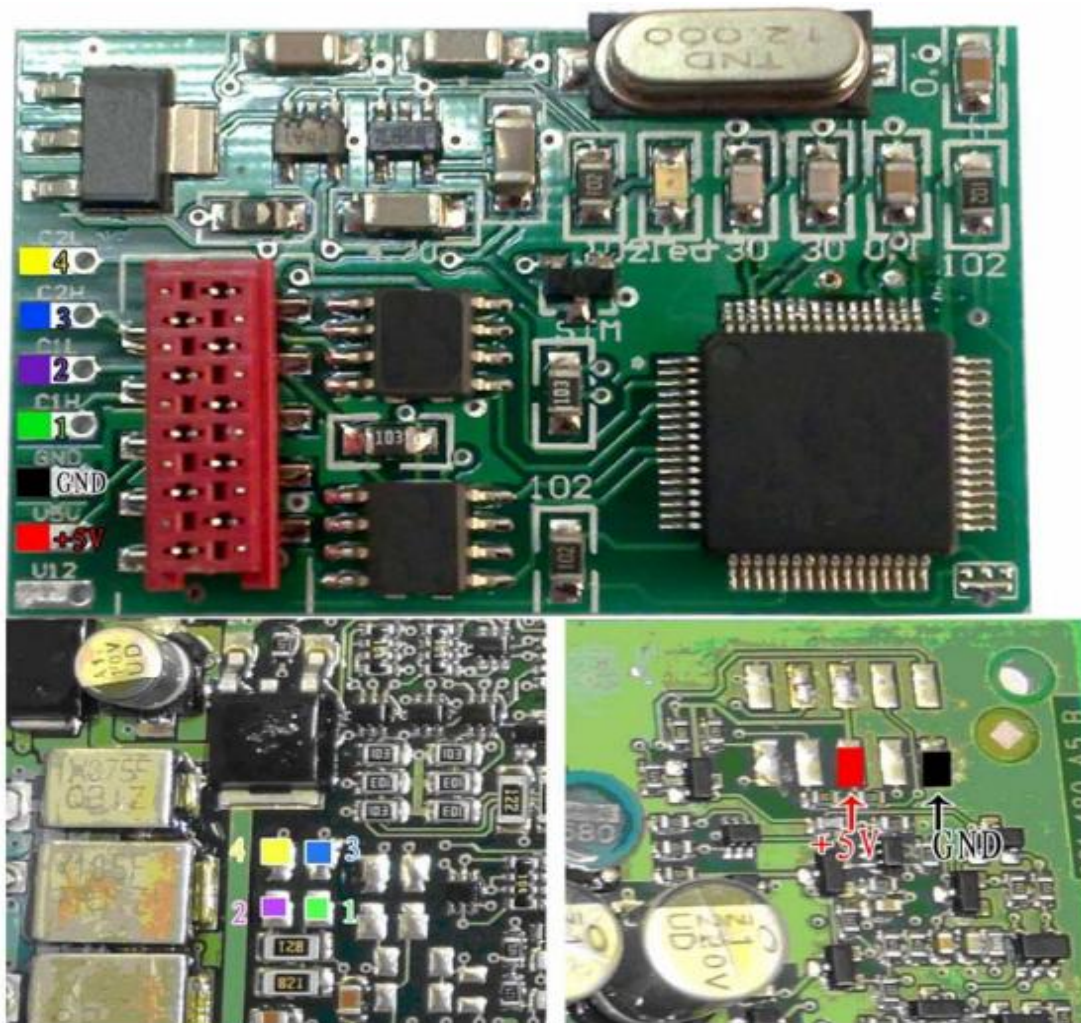


Figure 4

Done shown as followed figure 5.

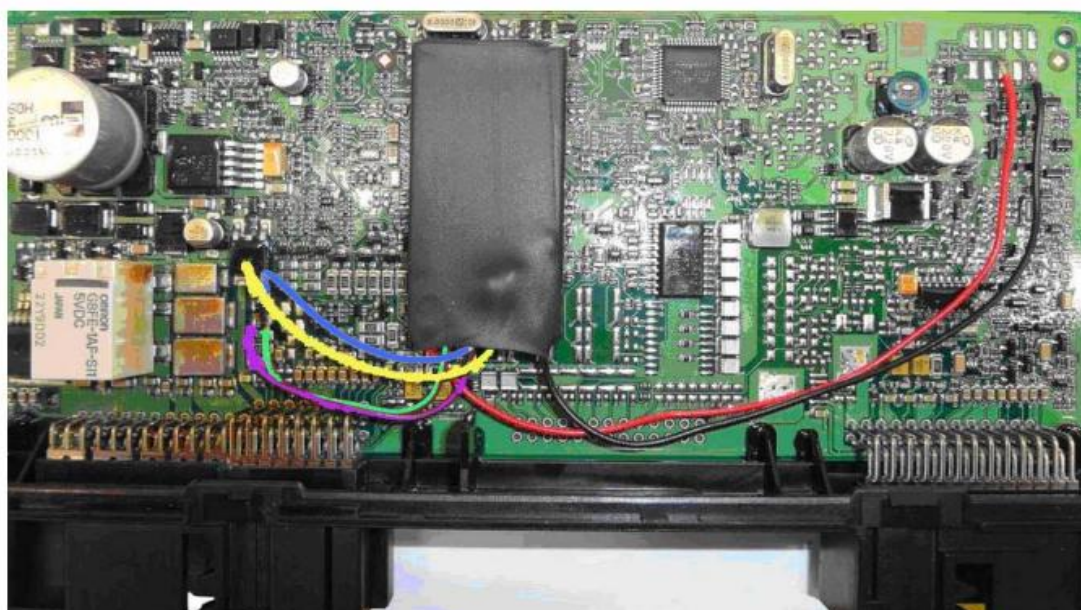


Figure 5



2、BMW 1 Series F20/3 Series F30 Back of dash shown as figure 6

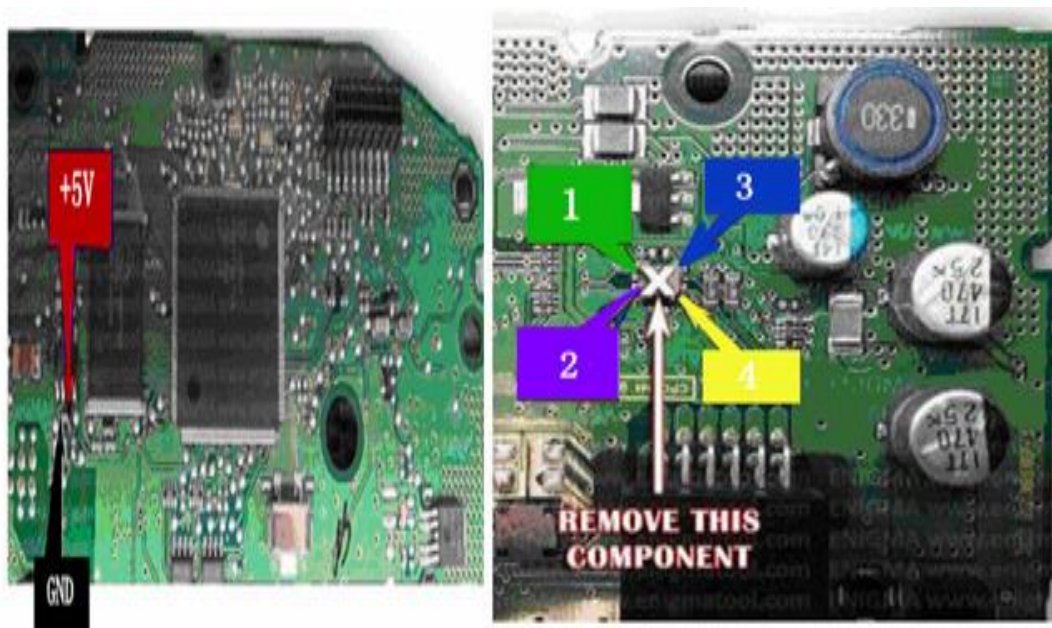



Figure 6

Remove the component labeled , and connect the points with the same color on BMW can blocker to the dash. Shown as figure7:

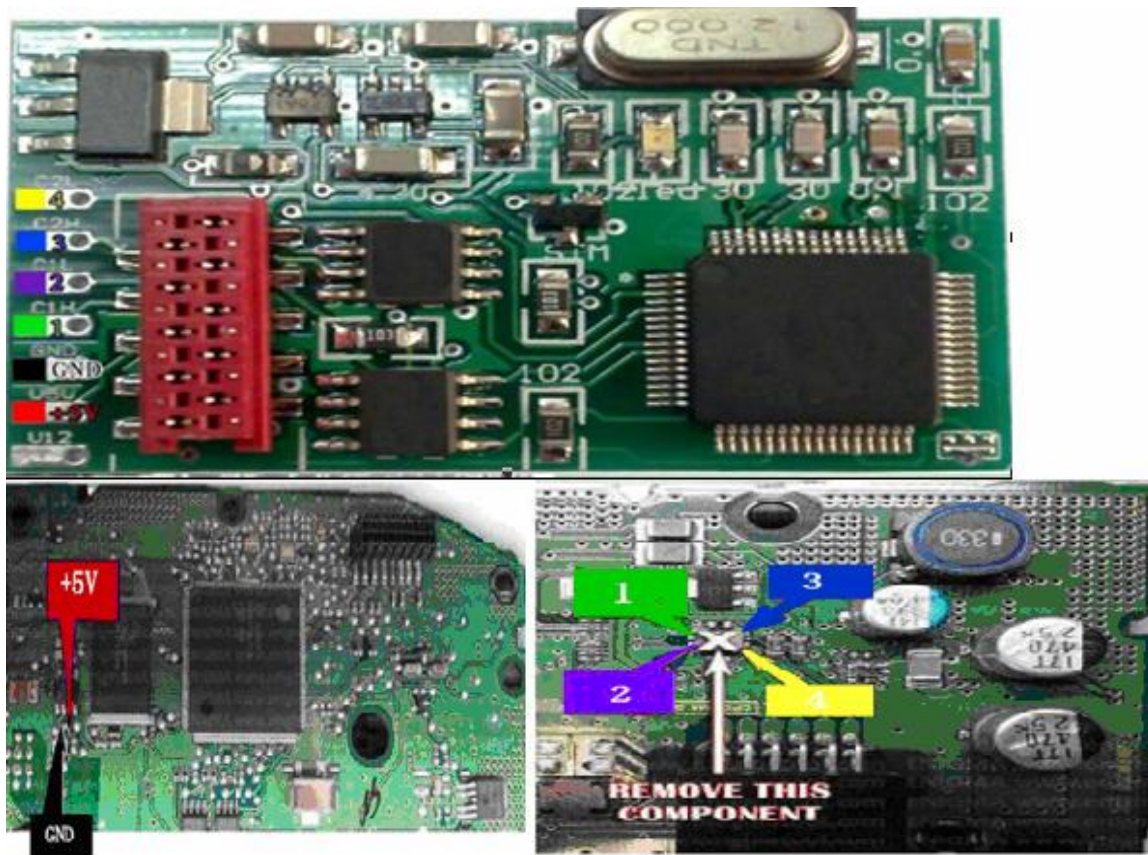


Figure 7

Install BMW can blocker to the dash successfully.

2、BMW 1 Series F20/3 Series F30 Back of dash shown as figure 8

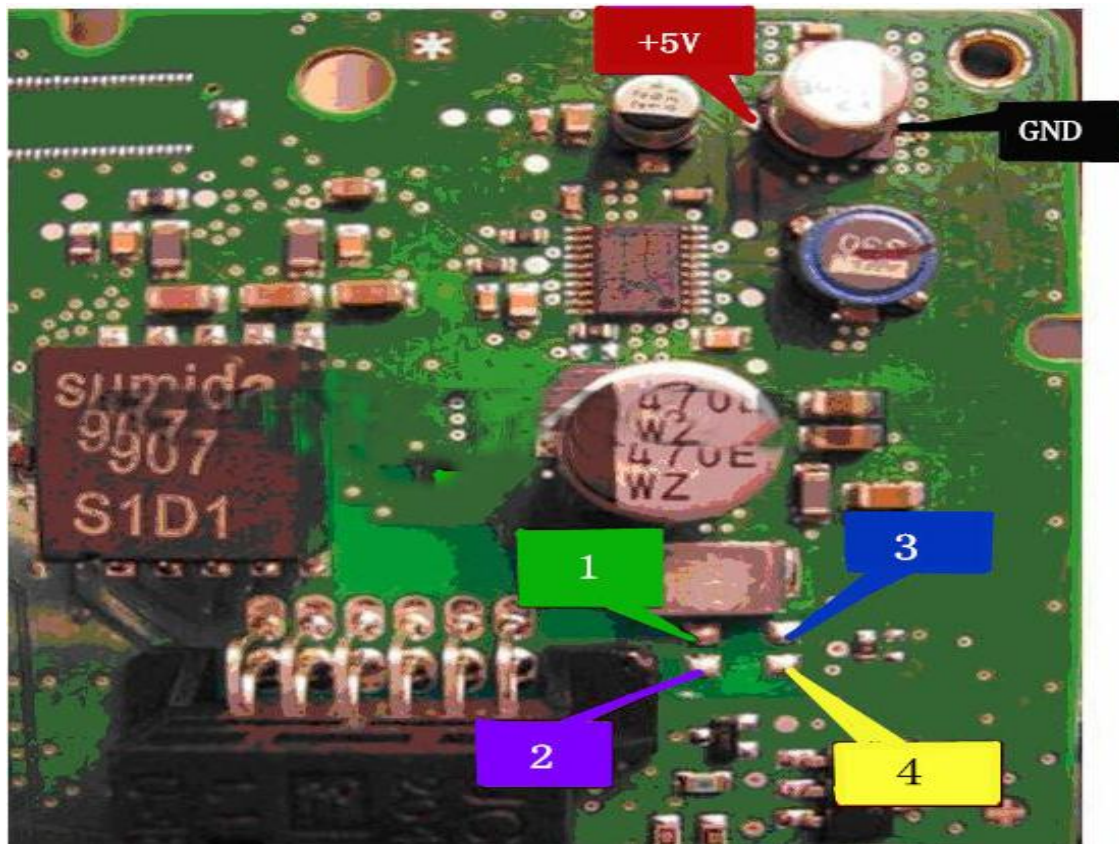


Figure 8

Connect the points with the same color on BMW can blocker to the dash. Shown as figure 9:



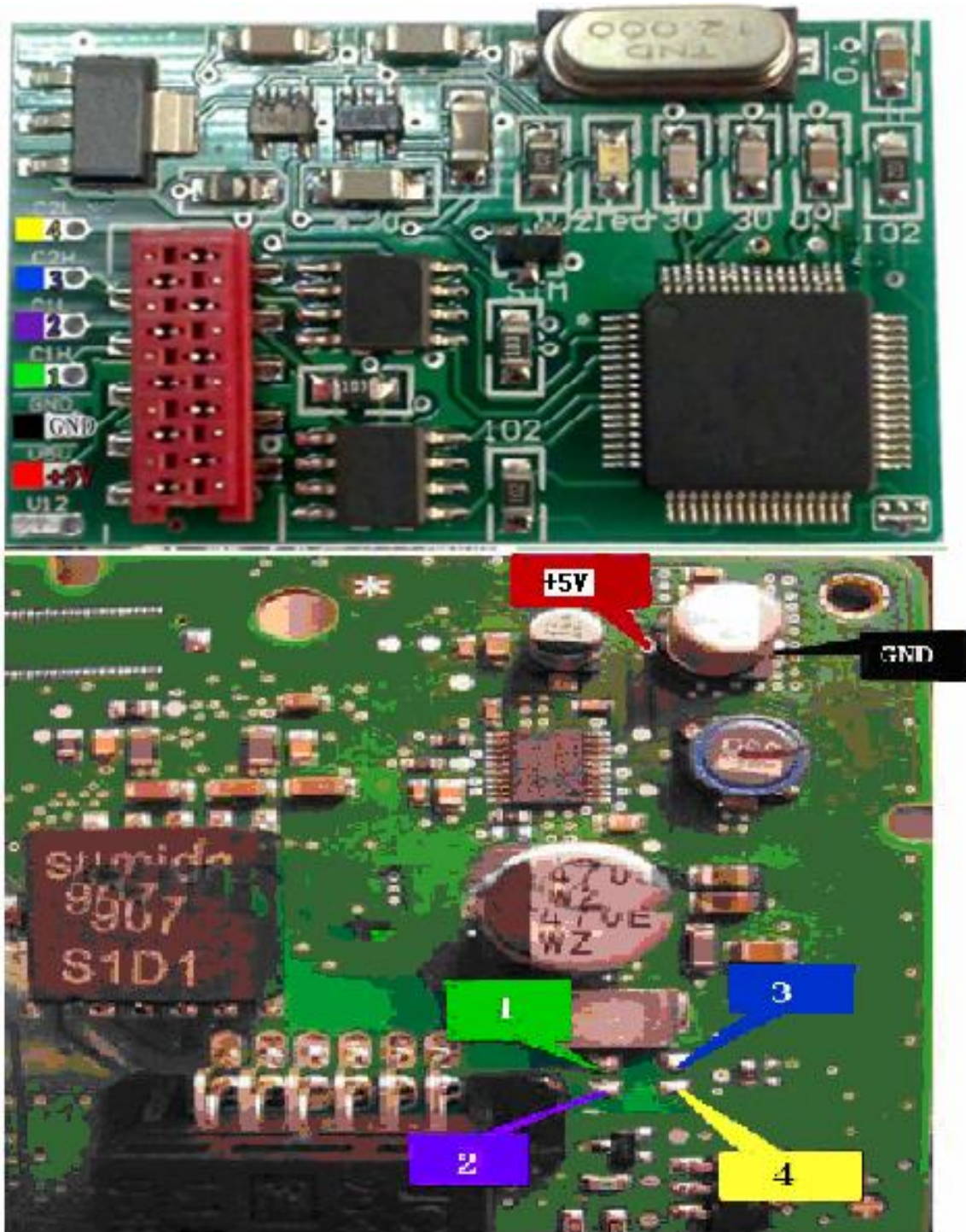


Figure 9  
Install BMW can blocker to the dash successfully.

4、BMW 5 Series F10/7 Series F01 Back of dash shown as figure 10

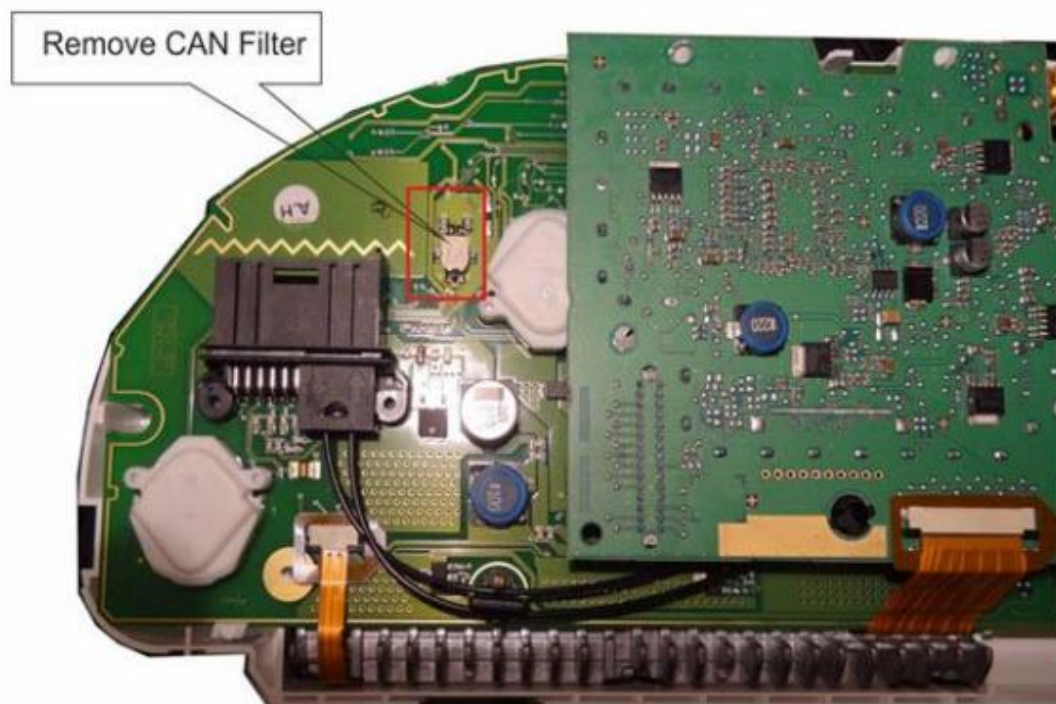


Figure 10

Remove the component in red circle in figure 10:

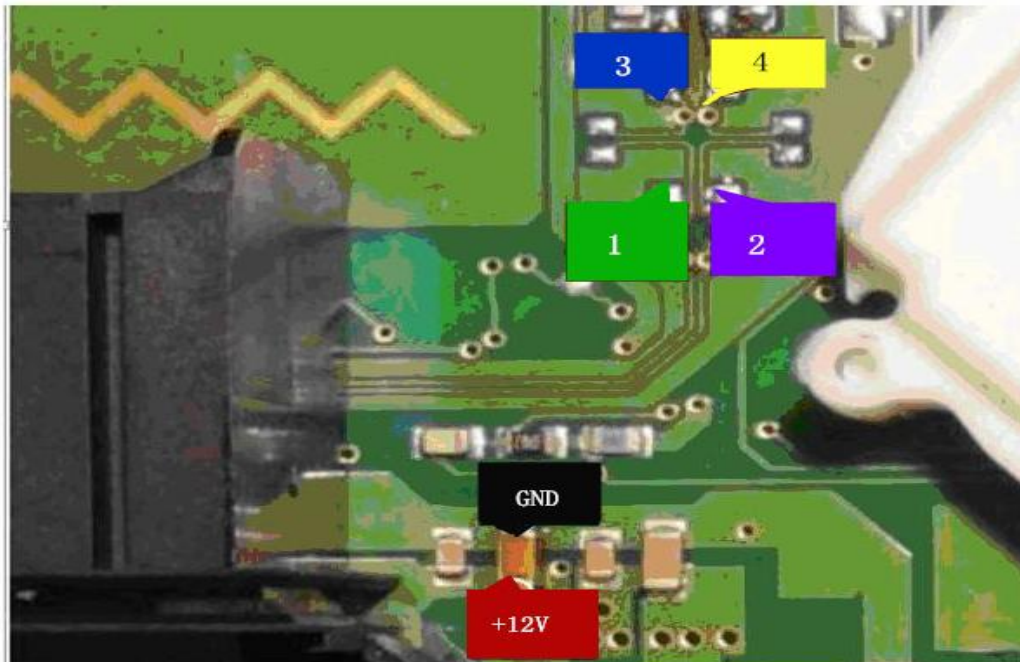


Figure 11



Connect the points with the same color on BMW can blocker to the dash. Shown as figure 12:

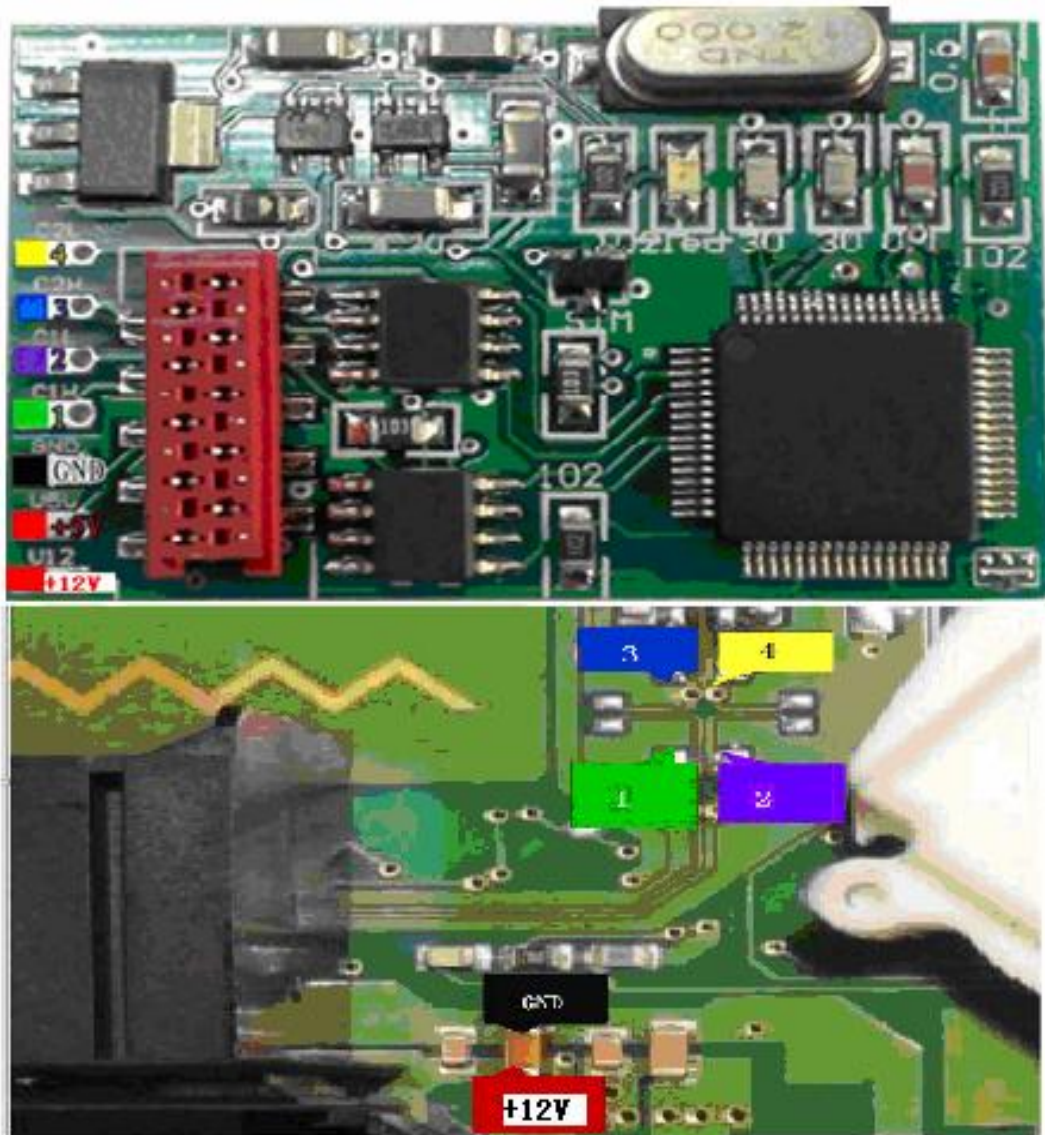


Figure 12

Install BMW can blocker to the dash successfully.